



2024 NEW ARRIVALS GUIDE

▲ FENIEX INDUSTRIES

Feniex Industries is a USA manufacturer of visual and audio emergency vehicle warning products. Located in the heart of Texas, Feniex is the fastest growing emergency vehicle manufacturer.

Feniex changes lives by manufacturing innovative, American-made products for the world's toughest jobs.



MADE IN THE USA.
PREMIER VEHICLE LIGHTING





LETTER FROM THE CHIEF SALES OFFICER

I am thrilled to present to you our latest product catalog, showcasing our innovative range of solutions designed to empower you in serving your customers with excellence.

At Fenix, we pride ourselves on being the leader in multicolor, 1SKU programmable technology. This technology drives our ability to implement plans at every level, replacing the traditional build-to-order logic of our industry. Our commitment to providing the most cost-efficient and functional warning technology for vehicle applications across all global markets remains steadfast. Fenix equipment is meticulously designed and built with inventory consolidation principles, enabling the fastest lead times to customers and ease of use.

As Chief Sales Officer, I am deeply committed to your success. It's not just about selling products; it's about building relationships, understanding your needs, and providing the support you deserve. Whether you're an established partner or exploring our offerings for the first time, know that we are here to support you every step of the way.

In this catalog, you will find a comprehensive selection of our cutting-edge products. From state-of-the-art lighting solutions to advanced control systems, we continue to push the boundaries of innovation to ensure that you have the tools necessary to thrive in a competitive market.

"AS WE EMBARK ON THIS JOURNEY TOGETHER, I WANT TO EXPRESS MY GRATITUDE FOR YOUR CONTINUED PARTNERSHIP AND TRUST IN FENIEX INDUSTRIES. YOUR SUCCESS IS OUR SUCCESS, AND WE ARE HONORED TO BE A PART OF YOUR GROWTH STORY."

Thank you for choosing Fenix Industries as your trusted partner.

Yemilyn Mosley
Chief Sales Officer

TABLE OF CONTENTS

Quantum®

Product Guide.....	4
Unlock Software.....	5
Product Series.....	6

Q Series®

Product Guide.....	11
Product Series.....	12

V Series®

Product Guide.....	15
Product Series.....	16
V-Serial Controller.....	17

Contact Us

Phone Number: 1.800.615.8350

Email: support@feniex.com

Address: Feniex Industries
6320 E Stassney Ln, Bldg 1, Ste 175
Austin, TX 78744

Hours: Monday - Friday
9am - 6pm CST

Social Media



facebook.com/feniexindustries



linkedin.com/company/feniex-industries



[instagram.com/ feniexofficial](https://instagram.com/feniexofficial)



youtube.com/feniexindustries



tiktok.com/feniexinc



snapchat.com/add/feniexofficial

QUANTUM[®] 2.0

UNLOCK YOUR POTENTIAL

QUANTUM 2.0



Available in Single, Dual, Tri, Quad, Quint, and Amber.



14
FUNCTIONS

4-13
INPUTS

60°
OPTICS

PRODUCT	PART #	DIMENSIONS	LED COUNT
A. Quantum 44" Lightbar	QT4420**	44.5" x 11.8" x 1.6"	594 LEDs
B. Quantum 49" Lightbar	QT4920**	49.15" x 11.8" x 1.6"	702 LEDs
C. Quantum 60" Lightbar	QT6020**	59.8" x 11.8" x 1.6"	810 LEDs
D. Quantum 14" Mini Lightbar	QT6120**	13.94" x 8.1" x 1.6"	162 LEDs
E. Quantum 18" Mini Lightbar	QT1823**	17.9" x 8.1" x 1.6"	216 LEDs
F. Quantum 27" Mini Lightbar	QT2723**	27.1" x 8.1" x 1.6"	324 LEDs
G. Quantum Rocker Panel	QT8820**	63.75" x 1.3" x 2.25"	216 LEDs
H. Quantum 400 Stick	QT0420**	18.8" x 1.3" x 2.25"	108 LEDs
I. Quantum 600 Stick	QT0620**	28.1" x 1.3" x 2.25"	162 LEDs
J. Quantum 800 Stick	QT0820**	37.46" x 1.3" x 2.25"	216 LEDs
K. Quantum Arrow	QT1020**	42.46" x 1.3" x 15"	432 LEDs
L. Quantum Split Arrow	QT1020H**	21.5" x 2.75" x 15"	216 LEDs
M. Quantum Interior	QT*****	37.46" x 1" x 2.25"	216 LEDs
N. Quantum Spoiler	QT*****	13.06" x 2.1" x 4.6"	162 LEDs
O. Quantum Pillar	QT*****	4" x 10" x 20"	162 LEDs



QUANTUM[®] 2.0

UNLOCK SOFTWARE: HOW IT WORKS

UNLOCK LEVEL COLOR OPTIONS PER MODULE

Single Color Level

Dual Color Level

Tri Color Level

Quad Color Level

Quint Color Level

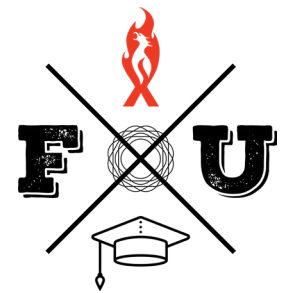
Amber Color Level

INTEGRATED FUNCTIONS ON EVERY LEVEL

- | | | |
|---------------------|----------------|------------------|
| ✓ Tail | ✓ Turn Signal | ✓ Work Light |
| ✓ Cruise | ✓ Brake Signal | ✓ Low Power |
| ✓ Front Flash | ✓ Left Alley | ✓ Cut Off |
| ✓ Rear Flash | ✓ Right Alley | ✓ Pattern Change |
| ✓ Arrow Directional | ✓ Take Down | |



**CLICK HERE TO
DOWNLOAD THE
QUANTUM UNLOCK
SOFTWARE**



**LEARN TO PROGRAM
QUANTUM HERE**



**OPTIONAL
CONVERTER FOR
UP TO 28 INPUTS**

Converter sold separately.



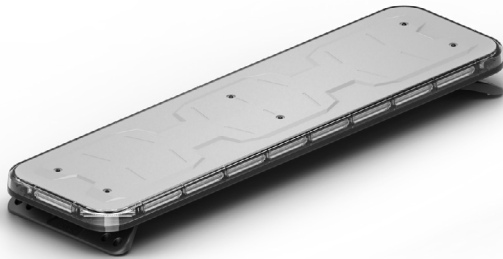
QUANTUM[®] 2.0

Available in Single, Dual, Tri, Quad, Quint, and Amber.

QUANTUM 2.0

QUANTUM[®] 44"

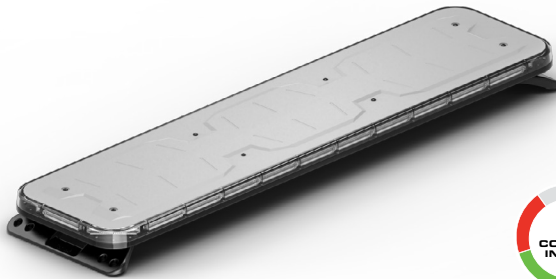
Full-Sized Lightbar



PART #	QT4420
DIMENSIONS	44" x 12.15" x 1.6"
VOLTAGE	10-18VDC
CURRENT DRAW	17 Amps @ 13V
INPUTS	13 Inputs
FLASH PATTERNS	Over 20
OPTICS	60° Wide Spread
LED COUNT	594 LEDs
CABLE LENGTH	15ft

QUANTUM[®] 49"

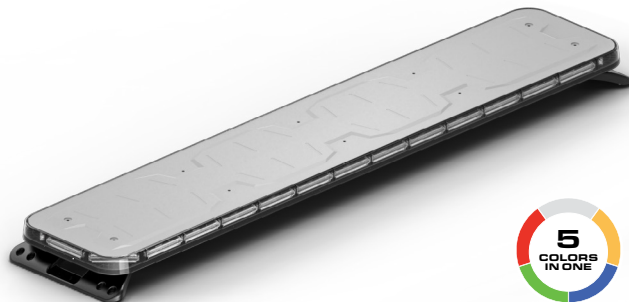
Full-Sized Lightbar



PART #	QT4920
DIMENSIONS	49.8" x 12.15" x 1.6"
VOLTAGE	10-18VDC
CURRENT DRAW	20 Amps @ 13V
INPUTS	13 Inputs
FLASH PATTERNS	Over 20
OPTICS	60° Wide Spread
LED COUNT	702 LEDs
CABLE LENGTH	15ft

QUANTUM[®] 60"

Full-Sized Lightbar



PART #	QT6020
DIMENSIONS	59.8" x 12.15" x 1.6"
VOLTAGE	10-18VDC
CURRENT DRAW	13 Amps @ 13V
INPUTS	14 Inputs
FLASH PATTERNS	Over 20
OPTICS	60° Wide Spread
LED COUNT	810 LEDs
CABLE LENGTH	15ft



QUANTUM[®] 2.0

Available in Single, Dual, Tri, Quad, Quint, and Amber.

QUANTUM[®] 14"

Mini Lightbar



PART #	QT6120
DIMENSIONS	14.45" x 8.5" x 1.6"
VOLTAGE	10-18VDC
CURRENT DRAW	5 Amps @ 13V
INPUTS	4 Inputs
FLASH PATTERNS	Over 20
OPTICS	60° Wide Spread
LED COUNT	162 LEDs
CABLE LENGTH	15ft

QUANTUM[®] 18"

Mini Lightbar



PART #	QT1823
DIMENSIONS	17.9" x 8.1" x 1.6"
VOLTAGE	10-18VDC
CURRENT DRAW	6 Amps @ 13V
INPUTS	4 Inputs
FLASH PATTERNS	Over 20
OPTICS	60° Wide Spread
LED COUNT	216 LEDs
CABLE LENGTH	15ft

QUANTUM[®] 27"

Mini Lightbar



PART #	QT2723
DIMENSIONS	27.1" x 8.1" x 1.6"
VOLTAGE	10-18VDC
CURRENT DRAW	9 Amps @ 13V
INPUTS	4 Inputs
FLASH PATTERNS	Over 20
OPTICS	60° Wide Spread
LED COUNT	324 LEDs
CABLE LENGTH	15ft

QUANTUM[®] 2.0

Available in Single, Dual, Tri, Quad, Quint, and Amber.

QUANTUM 2.0

QUANTUM[®] 400

Lightstick



PART #	QT0420
DIMENSIONS	18.8" x 2.25" x 1.25"
VOLTAGE	10-18VDC
CURRENT DRAW	3 Amps @ 13V
INPUTS	10 Inputs
FLASH PATTERNS	Over 20
OPTICS	60° Wide Spread
LED COUNT	108 LEDs
CABLE LENGTH	10ft

QUANTUM[®] 600

Lightstick



PART #	QT0620
DIMENSIONS	28.1" x 2.25" x 1.25"
VOLTAGE	10-18VDC
CURRENT DRAW	5 Amps @ 13V
INPUTS	10 Inputs
FLASH PATTERNS	Over 20
OPTICS	60° Wide Spread
LED COUNT	162 LEDs
CABLE LENGTH	10ft

QUANTUM[®] 800

Lightstick



PART #	QT8820
DIMENSIONS	37.46" x 2.25" x 1.25"
VOLTAGE	10-18VDC
CURRENT DRAW	6 Amps @ 13V
INPUTS	10 Inputs
FLASH PATTERNS	Over 20
OPTICS	60° Wide Spread
LED COUNT	216 LEDs
CABLE LENGTH	10ft



QUANTUM[®] 2.0

Available in Single, Dual, Tri, Quad, Quint, and Amber.

QUANTUM[®] ROCKER

Lightstick



PART #	QT8820
DIMENSIONS	63.75" x 2.25" x 1.25"
VOLTAGE	10-18VDC
CURRENT DRAW	6 Amps @ 13V
INPUTS	10 Inputs
FLASH PATTERNS	Over 20
OPTICS	60° Wide Spread
LED COUNT	216 LEDs
CABLE LENGTH	10ft

QUANTUM[®] ARROW

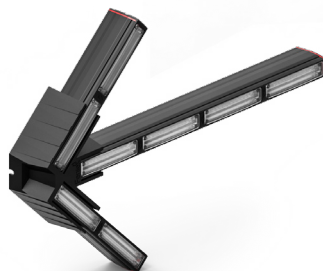
Lightstick



PART #	QT1020
DIMENSIONS	42.5" x 2.75" x 15"
VOLTAGE	10-18VDC
CURRENT DRAW	12 Amps @ 13V
INPUTS	10 Inputs
FLASH PATTERNS	Over 20
OPTICS	60° Wide Spread
LED COUNT	432 LEDs
CABLE LENGTH	10ft

QUANTUM[®] SPLIT ARROW

Lightstick



PART #	QT1020H
DIMENSIONS	21.5" x 2.75" x 15"
VOLTAGE	10-18VDC
CURRENT DRAW	6 Amps @ 13V
INPUTS	10 Inputs
FLASH PATTERNS	Over 20
OPTICS	60° Wide Spread
LED COUNT	216 LEDs
CABLE LENGTH	10ft

QUANTUM[®] 2.0

Available in Single, Dual, Tri, Quad, Quint, and Amber.

QUANTUM 2.0

QUANTUM[®] INTERIOR

Interior Lightbar



PART #	QT****
DIMENSIONS	37.46" x 1" x 2.25"
VOLTAGE	10-18VDC
CURRENT DRAW	5 Amps @ 13V
INPUTS	10 Inputs
FLASH PATTERNS	Over 20
OPTICS	60° Wide Spread
LED COUNT	216 LEDs
CABLE LENGTH	10ft
TYPE	Tahoe, Suburban, Silverado, Sierra, Ram 1500/2500/3500, Charger, Durango, Explorer, Expedition, F-150, F-250, F-350, F-450

QUANTUM[®] SPOILER

Perimeter



PART #	QT****
DIMENSIONS	13.06" x 2.1" x 4.6"
VOLTAGE	10-18VDC
CURRENT DRAW	5 Amps @ 13V
INPUTS	10 Inputs
FLASH PATTERNS	Over 20
OPTICS	60° Wide Spread
LED COUNT	162 LEDs
CABLE LENGTH	10ft
TYPE	Tahoe, Suburban, Explorer

QUANTUM[®] PILLAR

Perimeter



PART #	QT****
DIMENSIONS	4" x 10" x 20"
VOLTAGE	10-18VDC
CURRENT DRAW	5 Amps @ 13V
INPUTS	10 Inputs
FLASH PATTERNS	Over 20
OPTICS	60° Wide Spread
LED COUNT	162 LEDs
CABLE LENGTH	10ft
TYPE	Tahoe, Suburban, Explorer



Q SERIES®

CONNECTION MADE SIMPLE



31 Available Color Settings: Single, Dual, Tri, Quad, & Quint.



3
MODES

60°
OPTICS

PRODUCT	PART #	DIMENSIONS	LED COUNT
A. Q-Flat-Surface Mount	QFM-8101	5.5" x 0.56" x 1"	27 LEDs
B. Q-Flat-Dual-Surface Mount	QFD-8101	5.25" x 0.56" x 2.25"	54 LEDs
C. Q-Flat-Wide-Surface Mount	QFW-8101	9.625" x 0.56" x 1"	54 LEDs
D. Q-Surface Mount	QQM-8101	5.25" x 0.88" x 1.17"	27 LEDs
E. Q-Dual Surface Mount	QQDM-8101	5.25" x 0.88" x 2.25"	54 LEDs
F. Q-100 Stick	QQ-0120	4.8" x 2.25" x 1.25"	27 LEDs
G. Q-200 Stick	QQ-0220	9.5" x 2.25" x 1.25"	54 LEDs
H. Q-Under Mirror	QQUM-0121	4.6" x 2.5" x 1"	27 LEDs
I. Q-Mirror Mount	QQ-****	2.9" x 11" x 7"	54 LEDs
J. Q-1X Dash	QQ-1120	9.71" x 4.97" x 1.7"	27 LEDs
K. Q-2X Dash	QQ-2120	13.8" x 4.97" x 1.7"	54 LEDs



Q SERIES®

31 Available Color Settings: Single, Dual, Tri, Quad, & Quint.

Q-FLAT SURFACE MOUNT

Perimeter



PART #	QFM-8101
DIMENSIONS	5.5" x 0.56" x 1"
VOLTAGE	10-18VDC
CURRENT DRAW	1 Amp @ 13V
MODES	3 Modes
FLASH PATTERNS	14 Patterns
OPTICS	60° Wide Spread
LED COUNT	27 LEDs
CABLE LENGTH	1ft

Q-FLAT-DUAL SURFACE MOUNT

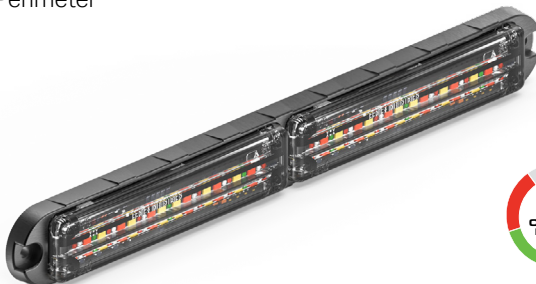
Perimeter



PART #	QFD-8101
DIMENSIONS	5.25" x 0.56" x 2.25"
VOLTAGE	10-18VDC
CURRENT DRAW	2 Amps @ 13V
MODES	3 Modes
FLASH PATTERNS	14 Patterns
OPTICS	60° Wide Spread
LED COUNT	54 LEDs
CABLE LENGTH	1ft

Q-FLAT-WIDE SURFACE MOUNT

Perimeter



PART #	QFW-8101
DIMENSIONS	9.625" x 0.56" x 1"
VOLTAGE	10-18VDC
CURRENT DRAW	2 Amps @ 13V
MODES	3 Modes
FLASH PATTERNS	14 Patterns
OPTICS	60° Wide Spread
LED COUNT	54 LEDs
CABLE LENGTH	1ft

Q SERIES®

31 Available Color Settings: Single, Dual, Tri, Quad, & Quint.

Q-SURFACE MOUNT

Perimeter



PART #	QQM-8101
DIMENSIONS	5.25" x 0.88" x 1.17"
VOLTAGE	10-18VDC
CURRENT DRAW	1 Amp @ 13v
MODES	3 Modes
FLASH PATTERNS	14 Patterns
OPTICS	60° Wide Spread
LED COUNT	27 LEDs
CABLE LENGTH	1ft

Q-DUAL SURFACE MOUNT

Perimeter



PART #	QQDM-8101
DIMENSIONS	5.25" x 0.88" x 2.25"
VOLTAGE	10-18VDC
CURRENT DRAW	2 Amps @ 13V
MODES	3 Modes
FLASH PATTERNS	14 Patterns
OPTICS	60° Wide Spread
LED COUNT	54 LEDs
CABLE LENGTH	1ft

Q-100 STICK

Perimeter



PART #	QQ-0120
DIMENSIONS	4.8" x 2.25" x 1.25"
VOLTAGE	10-18VDC
CURRENT DRAW	1 Amp @ 13v
MODES	3 Modes
FLASH PATTERNS	14 Patterns
OPTICS	60° Wide Spread
LED COUNT	27 LEDs
CABLE LENGTH	1ft

Q-200 STICK

Perimeter



PART #	QQ-0220
DIMENSIONS	9.5" x 2.25" x 1.25"
VOLTAGE	10-18VDC
CURRENT DRAW	2 Amps @ 13V
MODES	3 Modes
FLASH PATTERNS	14 Patterns
OPTICS	60° Wide Spread
LED COUNT	54 LEDs
CABLE LENGTH	1ft

Q SERIES®

31 Available Color Settings: Single, Dual, Tri, Quad, & Quint.

Q SERIES

Q-UNDER MIRROR

Perimeter



PART #	QQUM-0121
DIMENSIONS	4.6" x 2.5" x 1"
VOLTAGE	10-18VDC
CURRENT DRAW	1 Amp @ 13V
MODES	3 Modes
FLASH PATTERNS	14 Patterns
OPTICS	60° Wide Spread
LED COUNT	27 LEDs
CABLE LENGTH	1ft

Q-MIRROR MOUNT

Perimeter



PART #	QQD-8101
DIMENSIONS	2.9" x 11" x 7"
VOLTAGE	10-18VDC
CURRENT DRAW	2 Amps @ 13V
MODES	3 Modes
FLASH PATTERNS	14 Patterns
OPTICS	60° Wide Spread
LED COUNT	54 LEDs
CABLE LENGTH	1ft

Q-1X DASH

Perimeter



PART #	QQ-1120
DIMENSIONS	9.71" x 4.97" x 1.7"
VOLTAGE	10-18VDC
CURRENT DRAW	1 Amp @ 13V
MODES	3 Modes
FLASH PATTERNS	14 Patterns
OPTICS	60° Wide Spread
LED COUNT	27 LEDs
CABLE LENGTH	1ft

Q-2X DASH

Perimeter



PART #	QQ-2120
DIMENSIONS	13.8" x 4.97" x 1.7"
VOLTAGE	10-18VDC
CURRENT DRAW	2 Amps @ 13V
MODES	3 Modes
FLASH PATTERNS	14 Patterns
OPTICS	60° Wide Spread
LED COUNT	54 LEDs
CABLE LENGTH	1ft

V SERIES®

INFINITE POSSIBILITIES



31 Available Color Settings: Single, Dual, Tri, Quad, & Quint.



27
INPUTS

60°
OPTICS

PRODUCT	PART #	DIMENSIONS	LED COUNT
A. V-Flat-Surface Mount	VFM-8101	5.5" x 0.56" x 1"	27 LEDs
B. V-Flat-Dual Surface Mount	VFD-8101	5.25" x 0.56" x 2.25"	54 LEDs
C. V-Flat-Wide Surface Mount	VFW-8101	9.625" x 0.56" x 1"	54 LEDs
F. V-Surface Mount	VSM-8101	5.25" x 0.88" x 1.17"	27 LEDs
G. V-Dual Surface Mount	VDSM-8101	5.25" x 0.88" x 2.25"	54 LEDs
H. V-100 Stick	V-0120	4.8" x 2.25" x 1.25"	27 LEDs
I. V-200 Stick	V-0220	9.5" x 2.25" x 1.25"	54 LEDs
D. V-Under Mirror	VUM-0121	4.6" x 2.5" x 1"	27 LEDs
E. V-Mirror Mount	V-****	2.9" x 11" x 7"	54 LEDs
J. V-1X Dash	V-1120	9.71" x 4.97" x 1.7"	27 LEDs
K. V-2X Dash	V-2120	13.8" x 4.97" x 1.7"	54 LEDs
L. V Link	VLM-24	3.95" x 2.6" x .75"	N/A



V SERIES



V SERIES®

31 Available Color Settings: Single, Dual, Tri, Quad, & Quint.

V-FLAT SURFACE MOUNT

Perimeter



PART #	VFM-8101
DIMENSIONS	5.25" x 0.56" x 2.25"
VOLTAGE	10-18VDC
CURRENT DRAW	1 Amp @ 13V
INPUTS	27 Inputs
FLASH PATTERNS	Over 20
OPTICS	60° Wide Spread
LED COUNT	27 LEDs
CABLE LENGTH	1ft

V-FLAT-DUAL SURFACE MOUNT

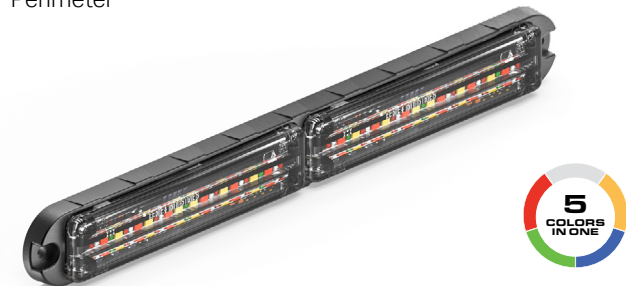
Perimeter



PART #	VFD-8101
DIMENSIONS	0.56" x 1" x 9.625"
VOLTAGE	10-18VDC
CURRENT DRAW	2 Amps @ 13V
INPUTS	27 Inputs
FLASH PATTERNS	Over 20
OPTICS	60° Wide Spread
LED COUNT	54 LEDs
CABLE LENGTH	1ft

V-FLAT-WIDE SURFACE MOUNT

Perimeter



PART #	VFW-8101
DIMENSIONS	0.56" x 2.25" x 5.5"
VOLTAGE	10-18VDC
CURRENT DRAW	2 Amps @ 13V
INPUTS	27 Inputs
FLASH PATTERNS	Over 20
OPTICS	60° Wide Spread
LED COUNT	54 LEDs
CABLE LENGTH	1ft

V SERIES®

31 Available Color Settings: Single, Dual, Tri, Quad, & Quint.

V-SURFACE MOUNT

Perimeter



PART #	VSM-8101
DIMENSIONS	0.88" x 1.7" x 5.22"
VOLTAGE	10-18VDC
CURRENT DRAW	1 Amp @ 13V
INPUTS	27 Inputs
FLASH PATTERNS	Over 20
OPTICS	60° Wide Spread
LED COUNT	27 LEDs
CABLE LENGTH	1ft

V-DUAL SURFACE MOUNT

Perimeter



PART #	VDSM-8101
DIMENSIONS	1.8" x 1.7" x 5.22"
VOLTAGE	10-18VDC
CURRENT DRAW	2 Amps @ 13V
INPUTS	27 Inputs
FLASH PATTERNS	Over 20
OPTICS	60° Wide Spread
LED COUNT	54 LEDs
CABLE LENGTH	1ft

V-100 STICK

Perimeter



PART #	V-0120
DIMENSIONS	1.3" x 2.25" x 4.8"
VOLTAGE	10-18VDC
CURRENT DRAW	1 Amp @ 13V
INPUTS	27 Inputs
FLASH PATTERNS	Over 20
OPTICS	60° Wide Spread
LED COUNT	27 LEDs
CABLE LENGTH	1ft

V-200 STICK

Perimeter



PART #	V-0220
DIMENSIONS	1.3" x 2.25" x 9.5"
VOLTAGE	10-18VDC
CURRENT DRAW	2 Amps @ 13V
INPUTS	27 Inputs
FLASH PATTERNS	Over 20
OPTICS	60° Wide Spread
LED COUNT	54 LEDs
CABLE LENGTH	1ft

V SERIES®

31 Available Color Settings: Single, Dual, Tri, Quad, & Quint.

V-UNDER MIRROR

Perimeter



PART #	VUM-0121
DIMENSIONS	1" x 2.5" x 4.6"
VOLTAGE	10-18VDC
CURRENT DRAW	1 Amp @ 13V
INPUTS	27 Inputs
FLASH PATTERNS	Over 20
OPTICS	60° Wide Spread
LED COUNT	27 LEDs
CABLE LENGTH	1ft

V-MIRROR MOUNT

Perimeter



PART #	V-****
DIMENSIONS	2.9" x 11" x 7"
VOLTAGE	10-18VDC
CURRENT DRAW	2 Amps @ 13V
INPUTS	27 Inputs
FLASH PATTERNS	Over 20
OPTICS	60° Wide Spread
LED COUNT	54 LEDs
CABLE LENGTH	1ft

V-1X DASH

Perimeter



PART #	V-1120
DIMENSIONS	9.71" x 4.97" x 1.7"
VOLTAGE	10-18VDC
CURRENT DRAW	1 Amp @ 13V
INPUTS	27 Inputs
FLASH PATTERNS	Over 20
OPTICS	60° Wide Spread
LED COUNT	27 LEDs
CABLE LENGTH	1ft

V-2X DASH

Perimeter



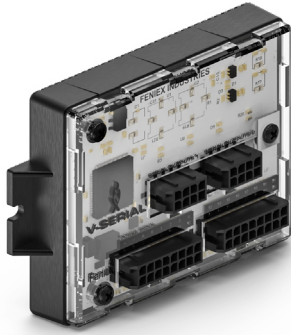
PART #	V-2120
DIMENSIONS	13.8" x 4.97" x 1.7"
VOLTAGE	10-18VDC
CURRENT DRAW	2 Amps @ 13V
INPUTS	27 Inputs
FLASH PATTERNS	Over 20
OPTICS	60° Wide Spread
LED COUNT	54 LEDs
CABLE LENGTH	1ft

V SERIES®

31 Available Color Settings: Single, Dual, Tri, Quad, & Quint.

V LINK

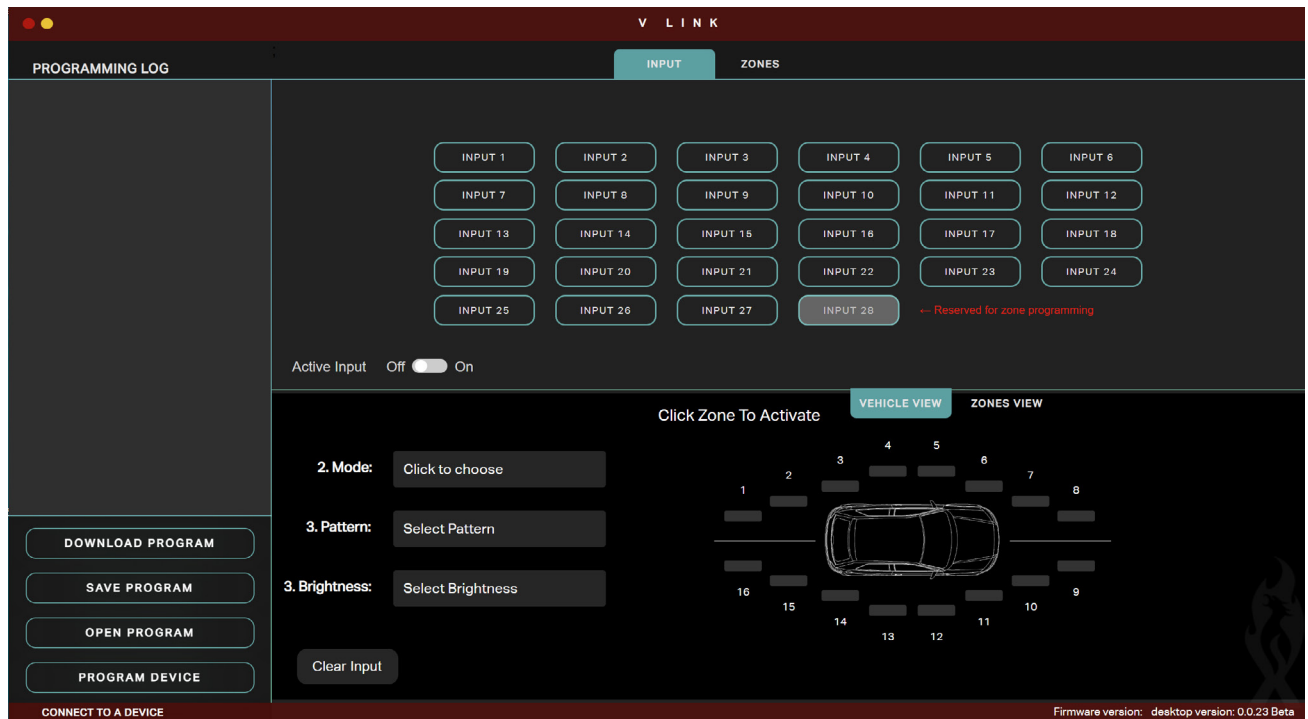
Controller



PART #	VLM-24
DIMENSIONS	3.95" x 2.6" x .75"
VOLTAGE	10-18VDC
CURRENT DRAW	1 Amp @ 12V
INPUTS	27 Inputs
FLASH PATTERNS	Over 20
OPTICS	-
LED COUNT	-
CABLE LENGTH	15ft

V LINK: HOW IT WORKS

You'll need a V Link in order to program your V Series product(s). V Series includes 27 programmable inputs, 8 serial ports, 1 zone selector input, and 16 zones (a zone is a location in which a module or group of modules are located). Each serial port can support up to 6 modules with a maximum of 48 modules on a single V Link.



With the V Link Software program, programming your V Series products is easy and hassle-free. Learn more about programming your V Series products at feniex.com/university/.

Fenix Industries, Inc.
1.800.615.8350

2024 New Arrivals Guide



WATCH THE 2024 FENIEX SUMMIT

GO TO [PAGES.FENIEX.COM/FENIEXSUMMIT2024](https://pages.fenix.com/fenixsummit2024)



FENIEX

MADE IN THE USA.
PREMIER VEHICLE LIGHTING